

# laservision®

## Laser Safety

### Custom Modular Barrier System

- Designed to fit your laser environment
- Complete wall module system with frame
- Certified laser barrier materials for multiple power densities
- Incorporates laser safety windows and doors
- Quick and easy set-up



---

we protect your eyes

[lasersafety.com](http://lasersafety.com)

# Laser Safety Custom Modular Barrier System

New modular design allows for fast and easy construction of protective barriers and enclosures. We customize each unit with laser-rated panels and safe viewing windows, according to your requirements. Each segment can be equipped with wheels for a more portable solution.



- Wall segments**
- Standard width 39"
  - Three height options: 19.5", 39" and 78"
  - Panel and window options available

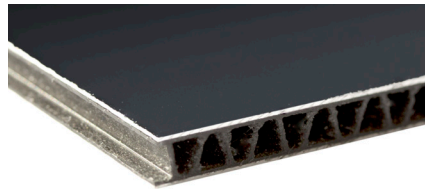


- Door module**
- Standard dimensions 78" x 39"
  - Right or left hinged
  - Covered gaps
  - Panel and window options available



- Corner connector**
- Features a 90° corner in three height options: 19.5", 39" and 78"

## Laser Safety Panels



### M5P06 Panel

- Lightweight protective paneling
- Long-lasting and maintenance free
- Laser safety rating:
  - 1,000 W/cm<sup>2</sup> 315 - 1050 nm
  - 2,500 W/cm<sup>2</sup> >1050 - 1400 nm
  - 10,000 W/cm<sup>2</sup> 10600 nm

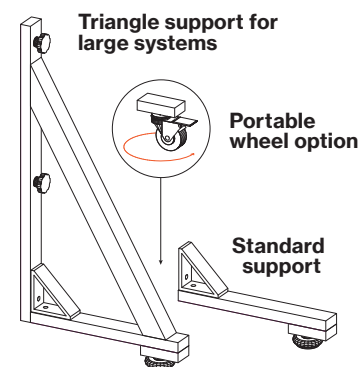


### X5P01 Panel

- Durable aluminum foam structure for high-power laser applications
- Laser safety rating\*:
  - 10,000 W/cm<sup>2</sup> 315 - 1050 nm
  - 25,000 W/cm<sup>2</sup> >1050 - 1400 nm

\*Tested for 100 seconds at 1mm beam diameter

## Leg Supports



## Laser Safety Windows

### P5P10

**Color:** Blue  
**Material:** Polycarbonate  
**VLT:** 16%



### Optical Density (OD)

OD 10+ @ 180 - 315 nm  
OD 8+ @ >315 - 385 nm  
OD 4+ @ >385 - 400 nm  
OD 2+ @ 730 - <770 nm  
OD 3+ @ 770 - <800 nm  
OD 4+ @ 800 - <840 nm  
OD 5+ @ 840 - <880 nm  
OD 6+ @ 880 - <960 nm  
OD 7+ @ 960 - <1030 nm  
OD 8+ @ 1030 - 2200 nm  
OD 4+ @ >2200 - 3600 nm  
OD 3+ @ >3600 - 4800 nm  
OD 4+ @ >4800 - 11500 nm  
OD 6+ @ 10600 nm

### P5P01

**Color:** Light Green  
**Material:** Acrylic  
**VLT:** 65%



### Optical Density (OD)

OD 6+ @ 180 - 315 nm  
OD 5+ @ 315 - 420 nm  
OD 3+ @ 790 - <820 nm  
OD 4+ @ 820 - <850 nm  
OD 5+ @ 850 - <940 nm  
OD 6+ @ 940 - 1065 nm  
OD 4+ @ 1065 - 1080 nm  
OD 3+ @ 2750 - 3000 nm

### P5N01

**Color:** Orange  
**Material:** Acrylic  
**VLT:** 38%



### Optical Density (OD)

OD 5+ @ 190 - 375 nm  
OD 4+ @ 375 - 532 nm  
OD 6+ @ 532 nm  
OD 5+ @ 10600 nm

### T5K02

**Color:** Clear  
**Material:** Glass  
**VLT:** 70%



### Optical Density (OD)

OD 3+ @ 850 - 900 nm  
OD 4+ @ 900 - 950 nm  
OD 5+ @ 950 - 1000 nm  
OD 7+ @ 1000 - 1600 nm  
OD 5+ @ 1600 - 2400 nm  
OD 5+ @ 2900 - 10600 nm

\*Additional windows available

